



RAZER RAIJU TE FIRMWARE UPDATE

VERSION 1.01

RAZER RAIJU TE FIRMWARE UPDATE VERSION 1.01

This document is a step by step process on how to update the Razer Raiju TE to firmware version 1.01

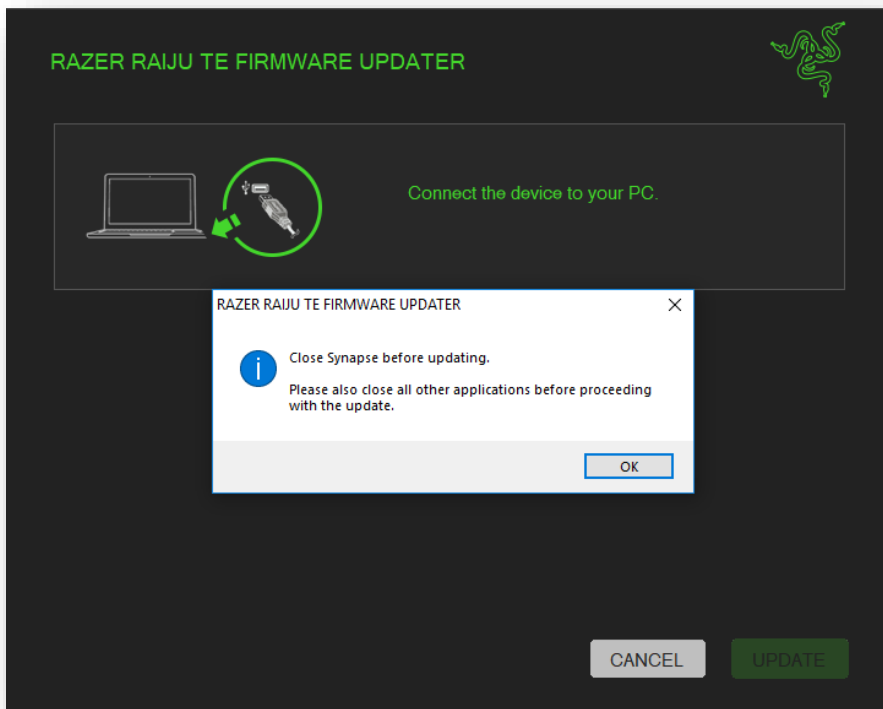
Please note you will need a Windows PC to install the update your Razer Raiju TE controller

Firmware Official Release Notes:

- The "Trigger Stop" function not working properly on PS4 with wired mode.
- Small drifting of the joystick on some units.

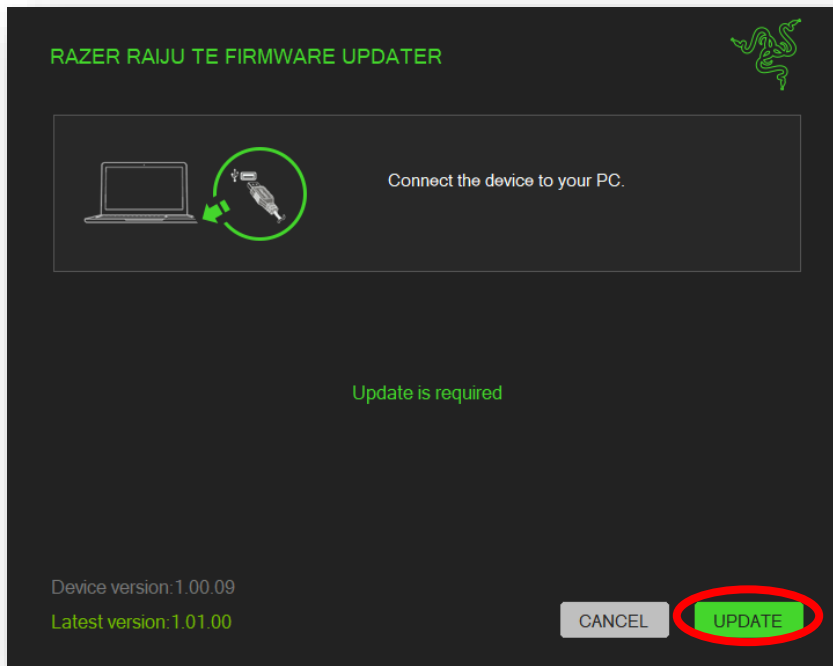
INSTALLATION PROCESS

1. If you have not already done so, download the firmware update to your PC at the link below:
 - http://dl.razerzone.com/drivers//RaijuTE//win//RaijuTE_FirmwareUpdater_v1.01.00_r1.exe
2. Close Razer Synapse and other applications before launching the firmware update.

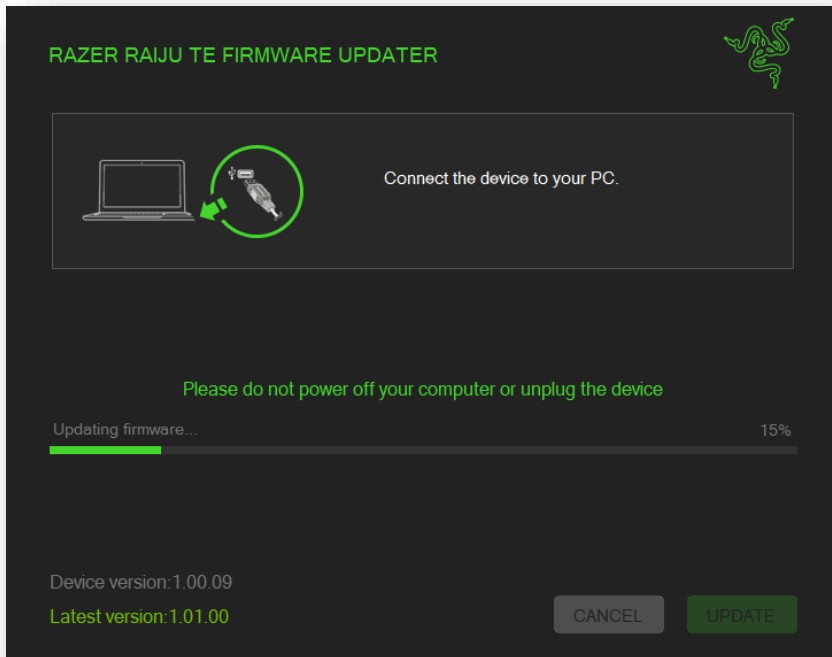


Connect the Razer Raiju Ultimate to a USB port onPlease note you will need a Windows PC to install the update your Razer Raiju Ultimate Edition controller

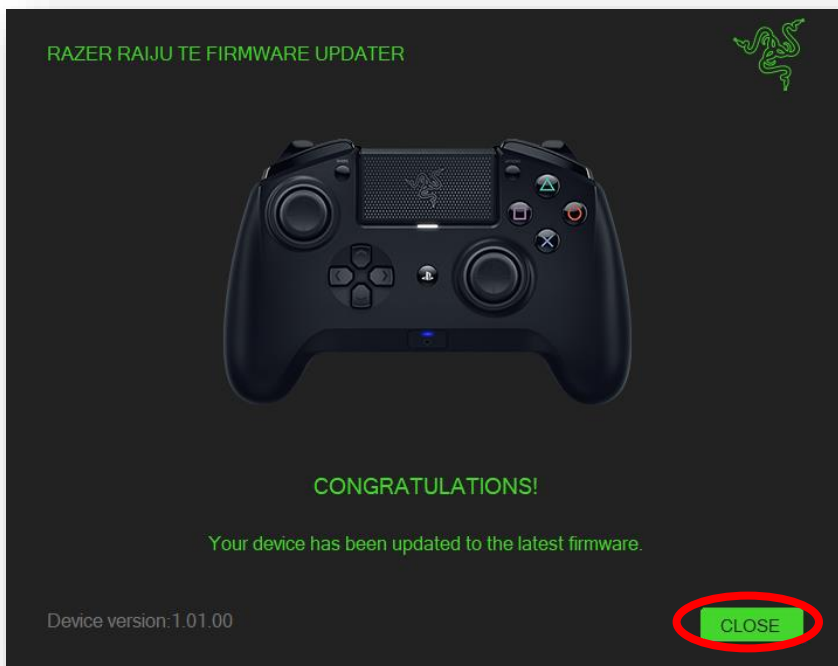
3. your PC
4. Launch the downloaded file and left click the "Update" button



5. Wait for the firmware updater to complete the update process



6. You should see a confirmation message once the firmware update has been successfully applied. Click "Close" to exit the updater. Your firmware has now been updated.



7. End